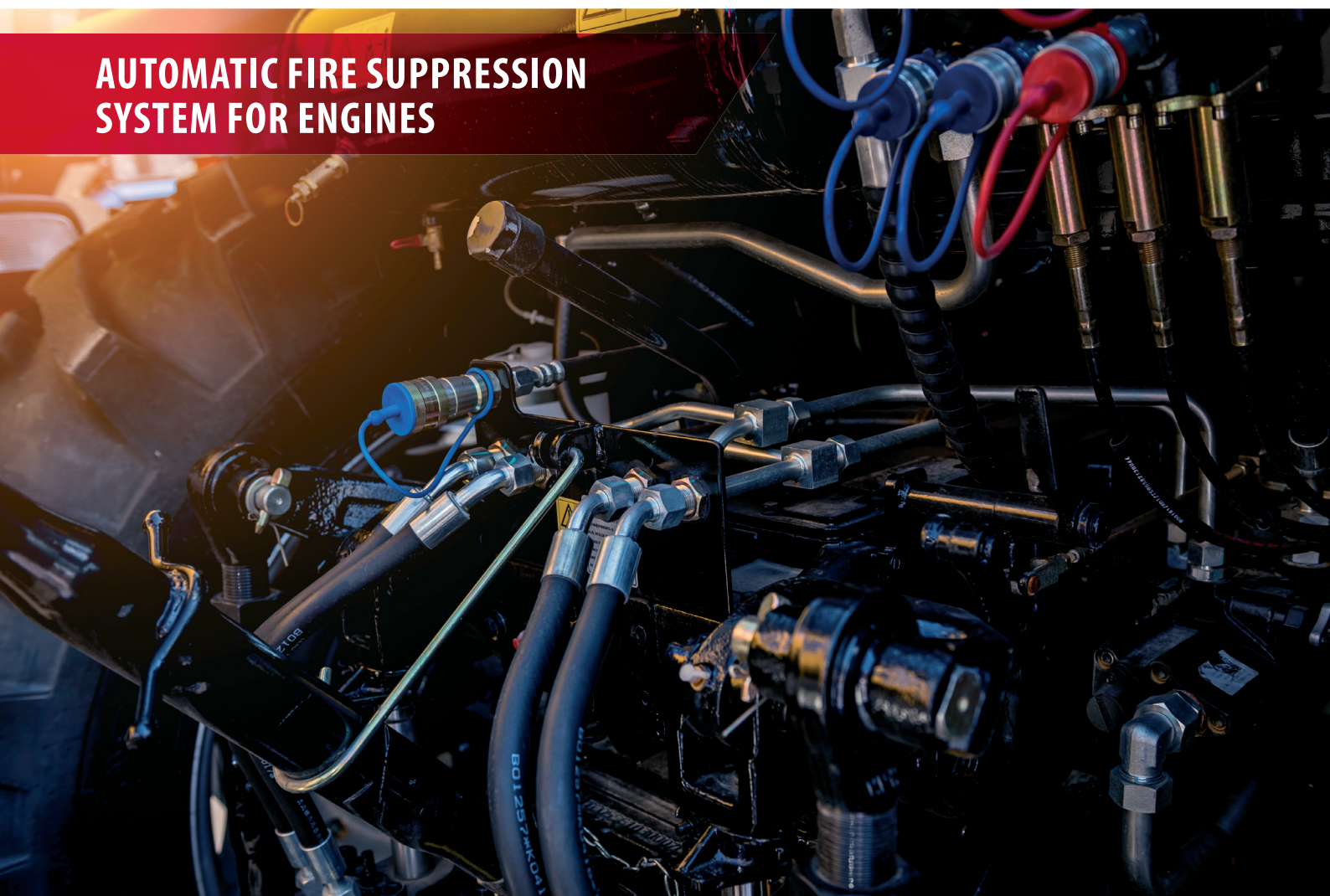




ROTAREX
FIRETEC

AUTOMATIC FIRE SUPPRESSION SYSTEM FOR ENGINES



eurofins
FA 127



Global-Mark.com.au®
ID Number: 108794

COMPACT LINE

PRE-ENGINEERED SYSTEMS FOR VEHICLE ENGINES

ROTAREX FIRE SUPPRESSION SYSTEM – MAIN VALUES



BUSES AND COACHES

COMPACT LINE® system is perfectly suited to protect buses and coaches. Once installed, it protects passengers and the environment for at least 10 years without any major maintenance. This reduces downtime while increasing the reliability.

MINING AND OFF-ROAD VEHICLES

These kinds of vehicles operate in the harshest conditions and need a reliable system which not only protects the vehicle and the driver, but also the wildfire-prone environment it works in.



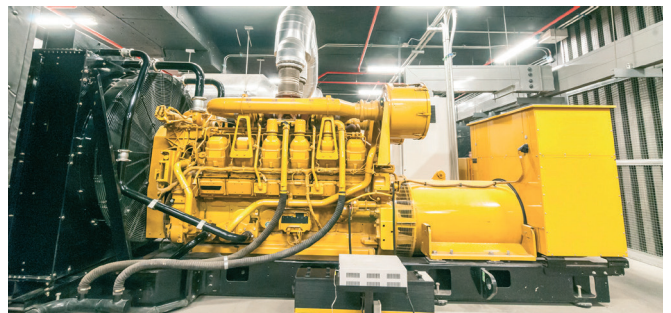
AIRPORT VEHICLES

Surrounded by highly sensitive equipment and other vehicles such as planes, airport vehicles require a highly reliable fire protection system which detects and suppresses a fire quickly to prevent costly damages.



POWER GENERATORS

Overheating, a leakage or other hazards can cause power generators to burn. This is not only dangerous because of the toxic gases emitted but also because it can quickly spread to the entire room or building.



HARVESTERS

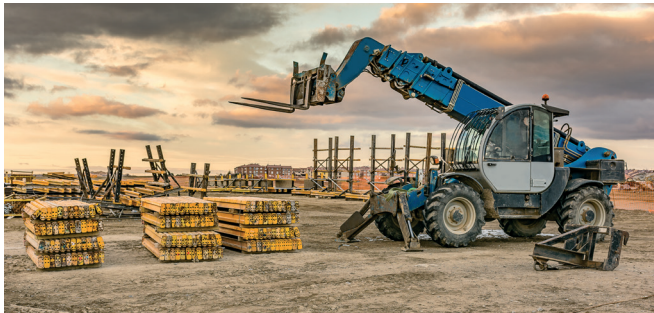
Designed for the efficient harvesting of various crops, these machines are often used many hours non-stop. This puts a lot of stress on the engine, which can lead to failure and fires. The COMPACT LINE® system protects not only your vehicle but also the driver, crops, surrounding vehicles, and workers.



COMPACT FIRE SUPPRESSION SYSTEMS FOR VEHICLE ENGINES

TRAINS

A fire in a passenger or merchandise train can do a lot of damage. In addition to injuring the people inside or destroying all the goods, a fire can also damage everything in the surrounding area: buildings and infrastructure as well as the station where other trains may be located.



FORKLIFTS HANDLERS

Manoeuvring with expensive goods can already be stressful enough which is why the COMPACT LINE system eliminates the risk of damaging the goods with a starting fire. Diesel and propane are likely to start a fire if they start leaking. Instant detection and immediate suppression are core values of the system, not only protecting material good but also people as well.

MILITARY VEHICLES

These vehicles are used in a variety of conditions, but their safety is a top priority. Not only do they transport people and expensive equipment, but they also operate in the toughest conditions and cannot tolerate any kind of downtime or fire damage. Thanks to its unique design, our COMPACT LINE® system can be installed in the tightest spaces and in any position without compromising its fire suppression capability.



THE COMPACT LINE SYSTEM IS APPROVED BY A WORLDWIDE PARTNER NETWORK

We have developed an international network of trained partners that will help finding the best solution for you

CONTACT US TO FIND YOUR LOCAL SUPPLIER!



ROTAREX FIRE SUPPRESSION SYSTEM – MAIN VALUES

- ★ Smallest UNECE-R107 certified water-mist fire suppression system on the market¹
- ★ Able to protect up to 4m³ engine compartment with only 4 liters of agent¹
- ★ Only one cylinder to install, patented dual-chamber technology merges propellant gas and agent into one cylinder
- ★ Operates in any position (horizontally, vertically, upside-down)
- ★ Regulated pressure at discharge to guarantee a more efficient cooling effect
- ★ No re-ignition, no chemicals and fluorine-free
- ★ Easy to refill (no pump or additional equipment required)
- ★ A worldwide trained partner network

¹ According to UNECE R107 certification

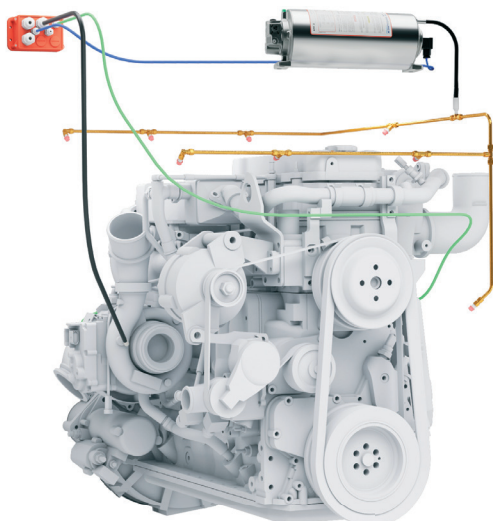
COMPACT LINE



COMPACT LINE Vehicle Fire System was the first system to be SPCR 183- certified²

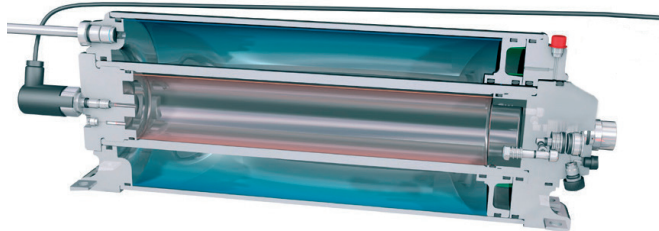
² P-MARK only applies to 7L size

ADVANTAGES OF AN ELECTRONIC DETECTION

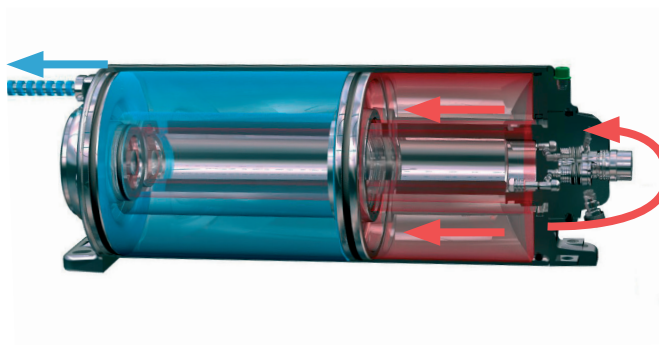


- ★ FM-approved Linear Heat Detection Wire (LHD-Wire) withstands extremely high engine compartment temperatures
 - Close to zero limitation in detection length
 - 10 years product life-time
 - High actuation temperature to withstand very hot and narrow engine compartments (180°C)
 - Improved resistance for harsh environments
- ★ Easy to install: fast installation due to wireless communication between the display and the electronic control unit (ECU)
- ★ Low maintenance = Less life cycle costs & less downtime

PATENTED DUAL-CHAMBER CYLINDER TECHNOLOGY



- ★ Dual-chamber = Extinguishing liquid and pressurized gas are in separate chambers
- ★ When activated, the pressurized gas is released into the outer chamber forcing against a piston
- ★ The piston pushes the liquid out through the discharge line
- ★ A built-in pressure regulator ensures a constant and sustained discharge
- ★ Robust design to withstand vibrations
- ★ Superior safety and leak prevention



A cylinder for every need :

4L

7L

10L

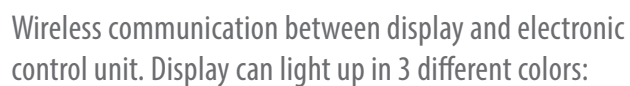
12L






A PROVEN-EFFECTIVE AGENT

- ★ Liquid-based agent (water mist) with glycol-free antifreezes / fluorine free / PFAS free
- ★ Long Life Suppression Agent (10 years)
- ★ Low freezing point (-55°C)
- ★ Easy clean-up after discharge/ much less corrosive compared to powder: No chemicals and fluorine-free
- ★ Temperature max +80°C





-  **ACTIVE : OK SIGNAL**
System is armed and under pressure
 -  **CAUTION-WARNING**
Leakage or electrical issues detected; Maintenance is needed
 -  **FIRE : ALARM-DISCHARGE SIGNAL**
Fire has been detected - System is discharging
- 1 OUTPUT CONNECTION**
To connect external buzzer

- ★ Easy installation process (no cables to route)
- ★ Less maintenance due to less electrical components
- ★ Extendable with GSM communication for real-time alerts
- ★ Real-time monitoring and surveillance due to the sensor technology
- ★ Detects the fire through the sensors and actuates the COMPACT LINE Fire Suppression System.
- ★ In case of the event of a fire the information is transmitted to the WMD or MUX

OPTIONAL: MANUAL TRIGGER



- ★ The manual trigger can be used together with a guard to actuate manually an electromagnetic Compact Line System.
- ★ It must be connected to an electronic control unit and can be used with a linear heat detector or independently.
- ★ The guard prevents any unintended actuation since it must be lifted before reaching the manual trigger. It can also be used with a tamper-evident seal.

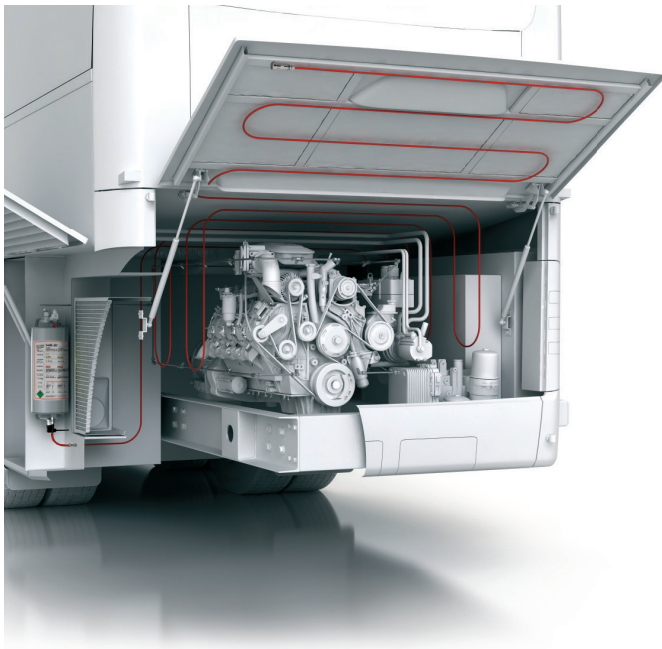
PNEUMATIC TUBE TECHNOLOGY (ALTERNATIVE TO LHD WIRE)

COMPACT LINE

Rotarex Firetec COMPACT LINE® pneumatic fire suppression systems uses a proprietary continuous linear sensor tube that reliably detects and actuates the release of the extinguishing agent using pneumatic technology and works completely autonomous without an external power source.

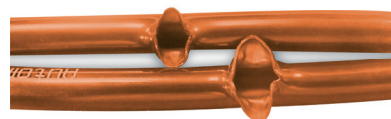


FIREDETEC PNEUMATIC TUBE



*Red tubing for visualization only. System is installed with black tubing.

- ★ 5+ year service lifetime
- ★ Low permeability
- ★ Can withstand high cycle temperatures
- ★ UV and Chemical resistant
- ★ Works autonomous without external power source





WE'RE WORLDWIDE

Brazil * China * France * Germany * Hungary * India
 Indonesia * Italy * Japan * Luxembourg * Malaysia * Middle East
 Mexico * Philippines * Poland * Singapore * South Africa
 South Korea * Spain * Sweden * Thailand * Taiwan
 United Kingdom * USA * Vietnam

Find out our locations here
rotarexfiretec.com/locations

